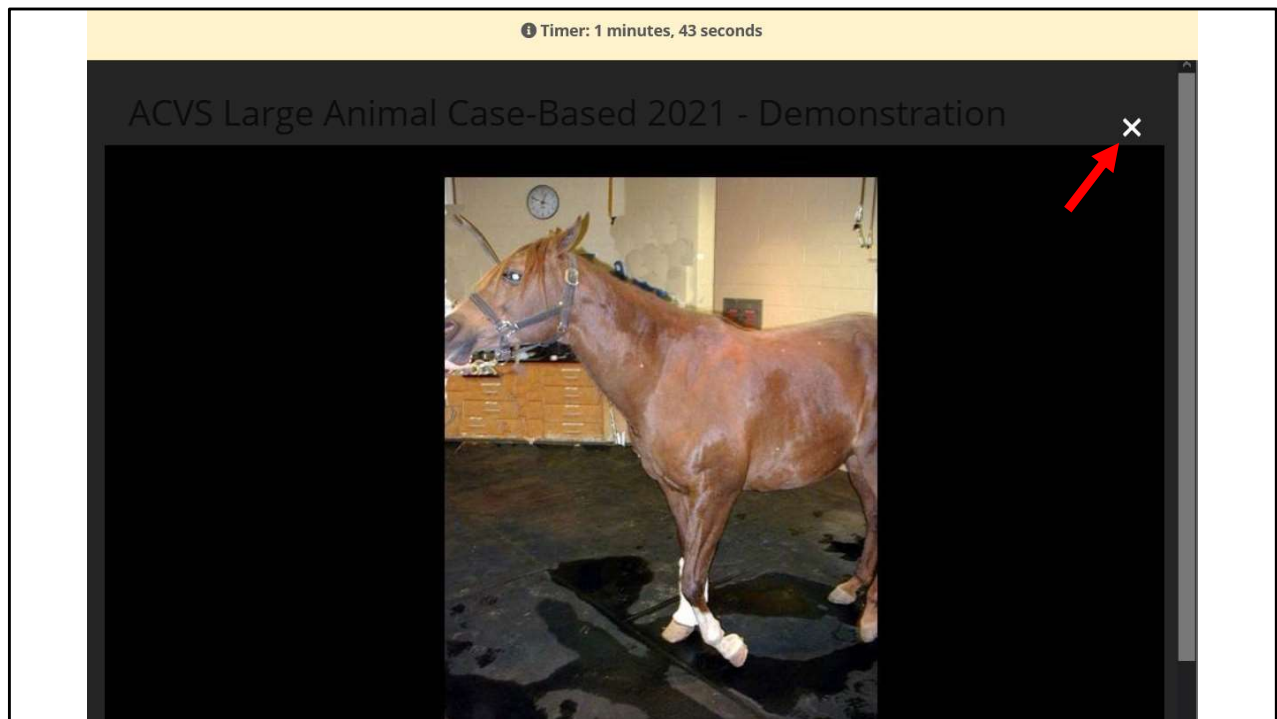
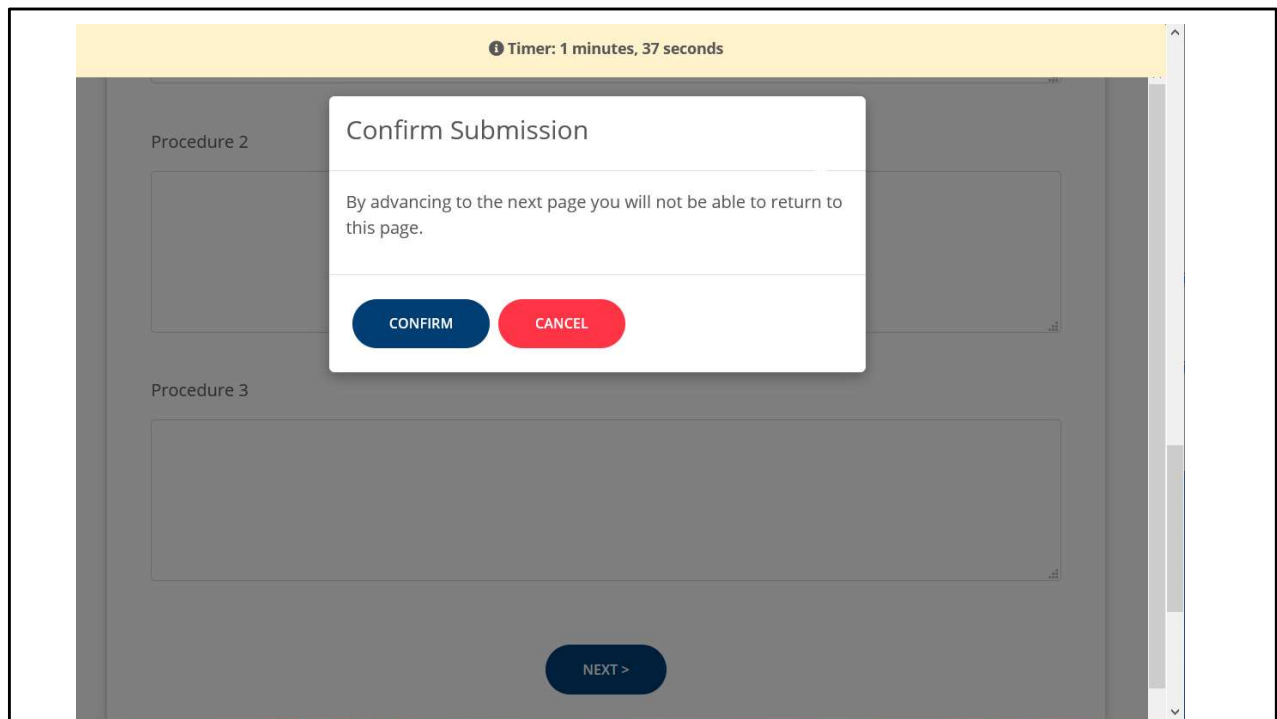


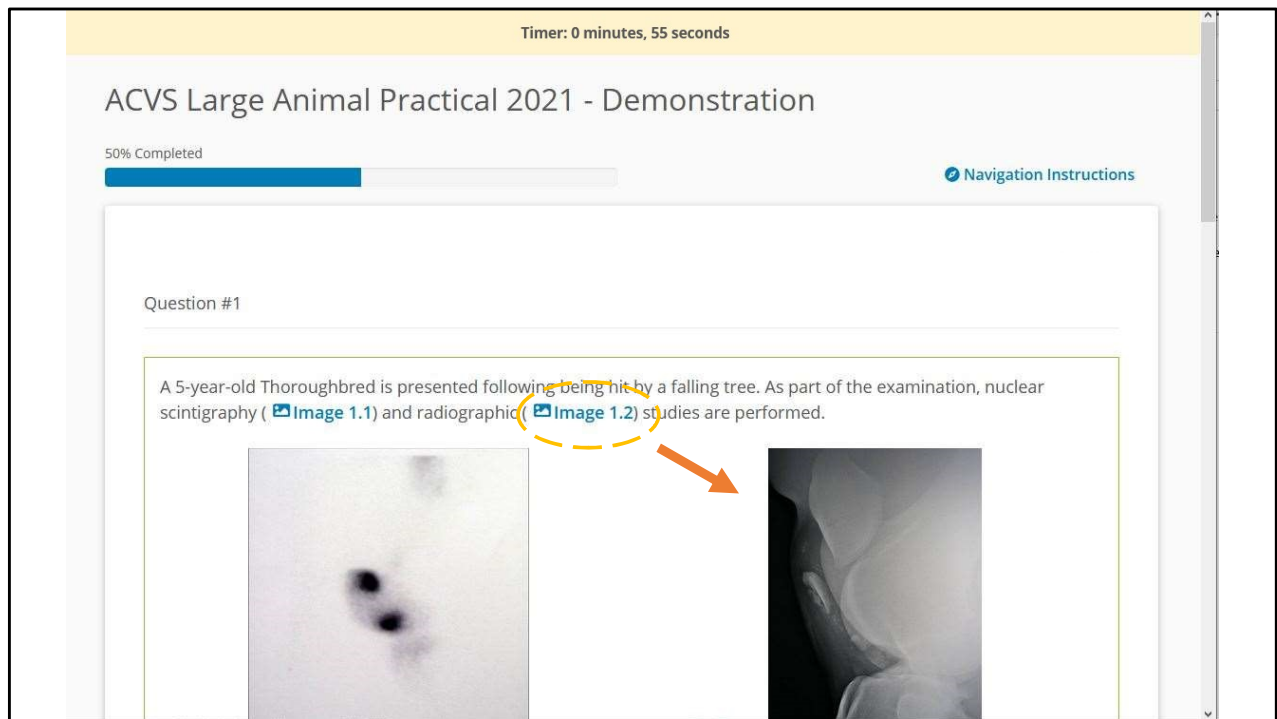
This Case-Based Section example shows the clock (red arrow) which is the time remaining just for this page. You will advance to the next page automatically at the end of that time period if you do not choose to advance yourself by clicking next at the bottom of the page. The purple arrow points to a typical scroll bar to move up/down a page. The green arrow points to the completion bar so the examinee has a concept of how much of the test has been completed. This bar represents the entire Case-Based section (including the orthopedic and soft tissue units). A similar bar is displayed on the Practical Section. Note, Image 1.1 (orange dashed circles) can only be viewed if clicked, it is not embedded.



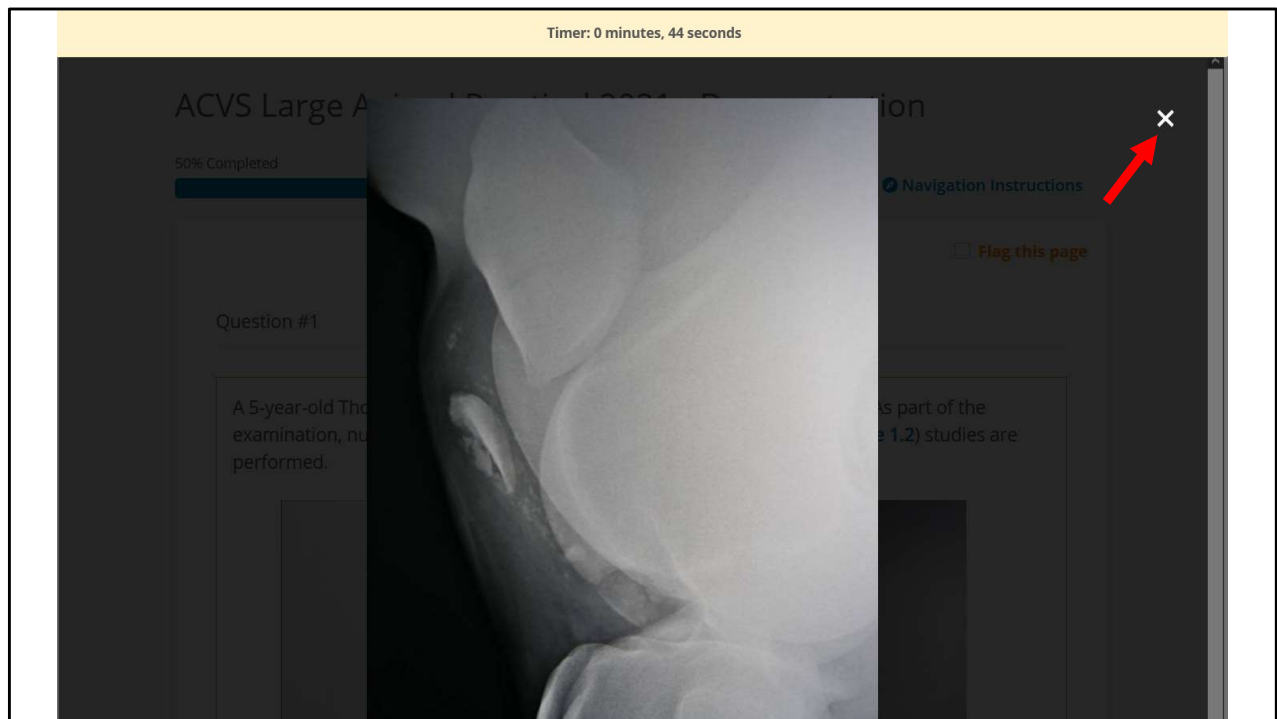
This is what is displayed after "Image 1.1" is clicked. The enlarged image will overlay the entire screen until the "X" is clicked (red arrow), to close the overlay and return the examinee to the test page. If the image is larger than the screen you will need to scroll back up to reveal the "X".



In this example the examinee has already hit “Next” at the bottom of the page and a pop up box has appeared to confirm that they wish to advance to the next page. Since the examinees **cannot** go back to a previous page on either the case based or practical this pop up box is extra security so the examinee does not advance accidentally. There is a very short delay while the next page loads, do not click on confirm multiple times as this will slow the computer down. However clicking on it multiple times will not advance you past the next page nor affect the timing.



In this Practical section example, similar to the Case-Based section, the banner at the top is the time remaining for this page and you will NOT be able to go back once you advance. The dashed orange circle is over a hyperlink that can be clicked to enlarge Image 1.2. The orange arrow points to image 1.2 that in this particular example is also embedded into the test. Some images are not embedded, and just viewed when the hyperlink is clicked (as displayed earlier).



This is what is displayed after “Image 1.2” is clicked. The enlarged image will overlay the entire screen until the “x” is clicked (red arrow), to close the overlay and return the examinee to the test page. Again if the image is larger than the screen you will need to scroll back to the top to reveal the "X"

Timer: 2 minutes, 51 seconds

ACVS Large Animal Practical 2021 - Demonstration

100% Completed

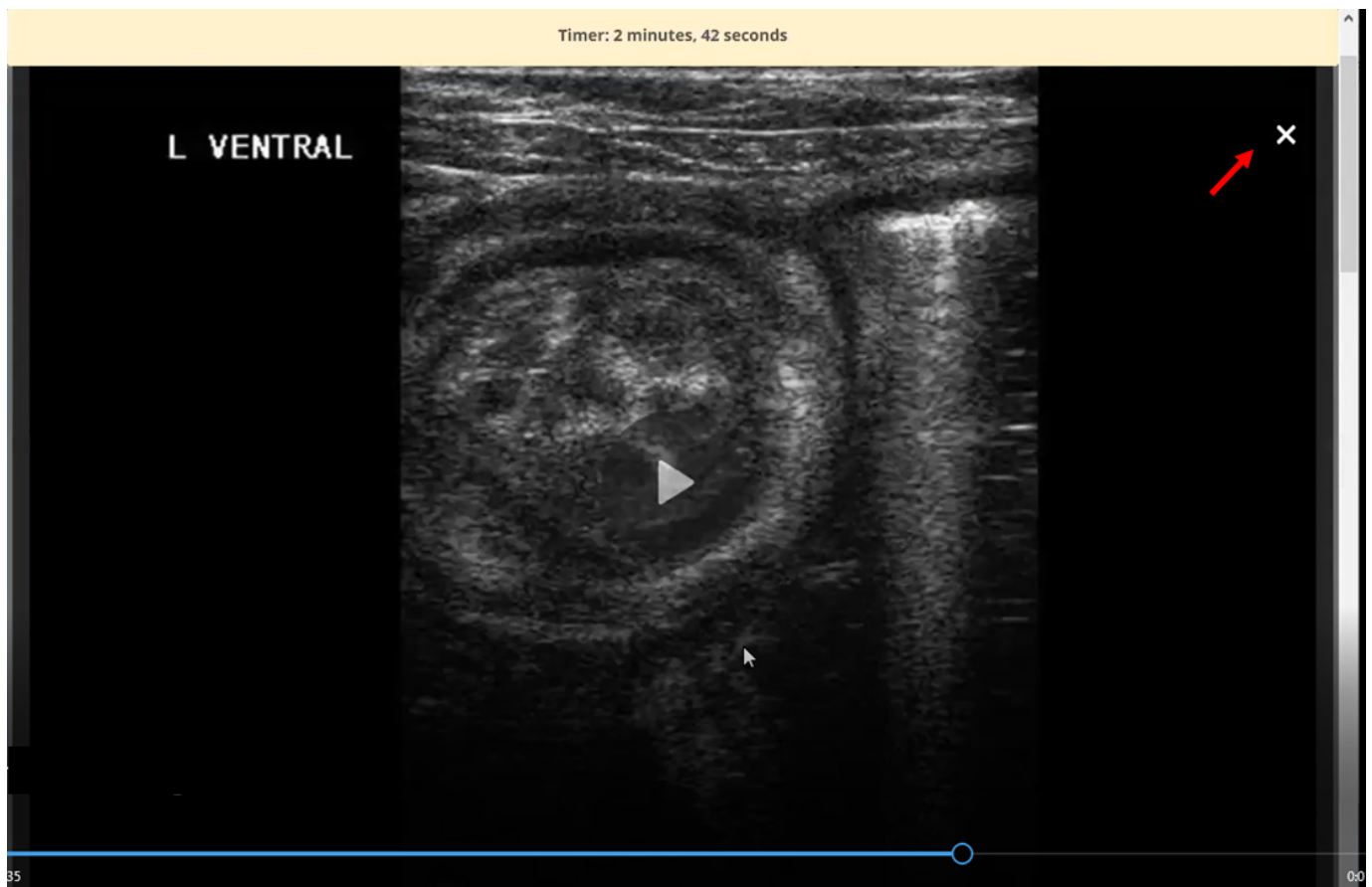
[Navigation Instructions](#)

Question #2

A 10-month old Thoroughbred colt is presented with a history of mild to moderate chronic intermittent colic refractory to medical management. An abdominal ultrasound is performed. [Video 2.1](#) depicts the ultrasonographic findings.

2.1 What is the diagnosis? **Be specific.** (2 points)

In this Practical section example the dashed orange circle is over a hyperlink that can be clicked to enlarge Video 2.1. The videos are best seen by clicking on the hyperlink. Do not download the videos. Videos can often be played within the page in a smaller size so they can be viewed while answering the question. Do not use the little box icon to enlarge the video- click on the hyperlink.



This is what is displayed after "Video 2.1" is clicked. The enlarged image will overlay the entire screen until the "x" is clicked (red arrow), to close the overlay and return the examinee to the test page. The large play button in the center can be clicked to start the video but you must move your cursor up to the top of the screen to ensure the play button disappears so you can see the entire image. You can use the slider at the bottom as you normally would. Do NOT use the escape key to go back to the questions. Use the "X" at the top of the screen to exit the video.