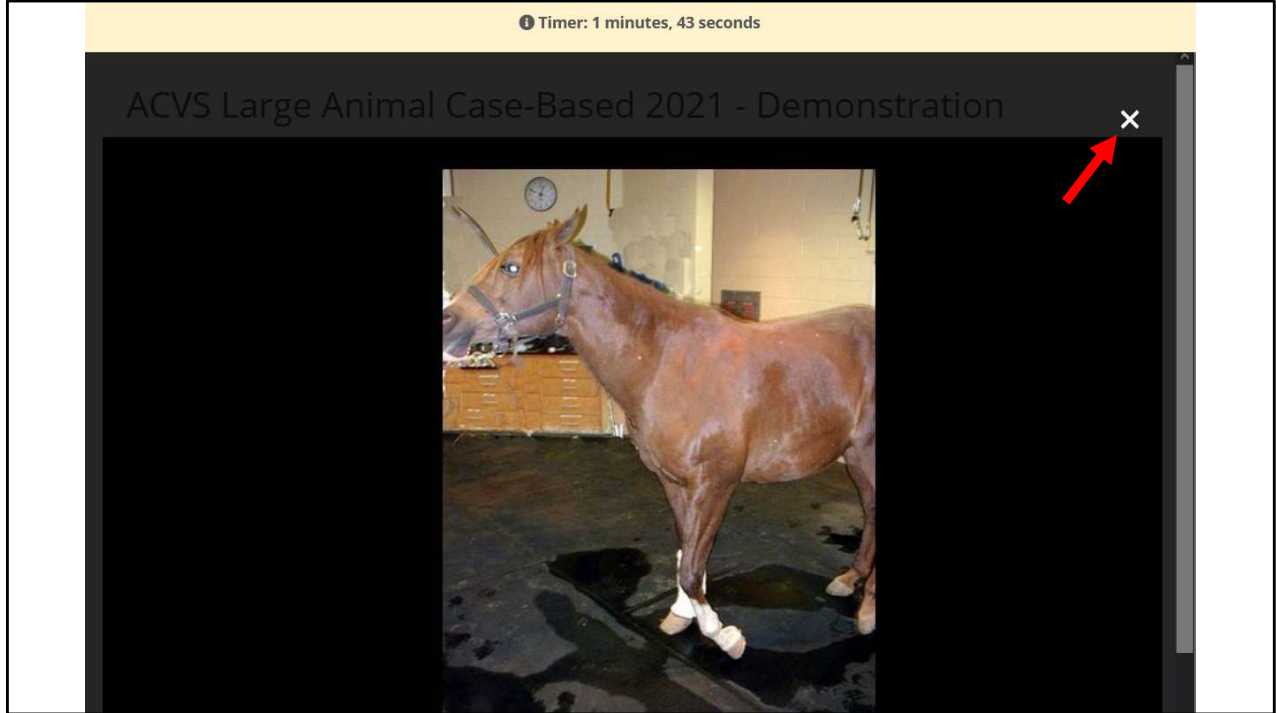
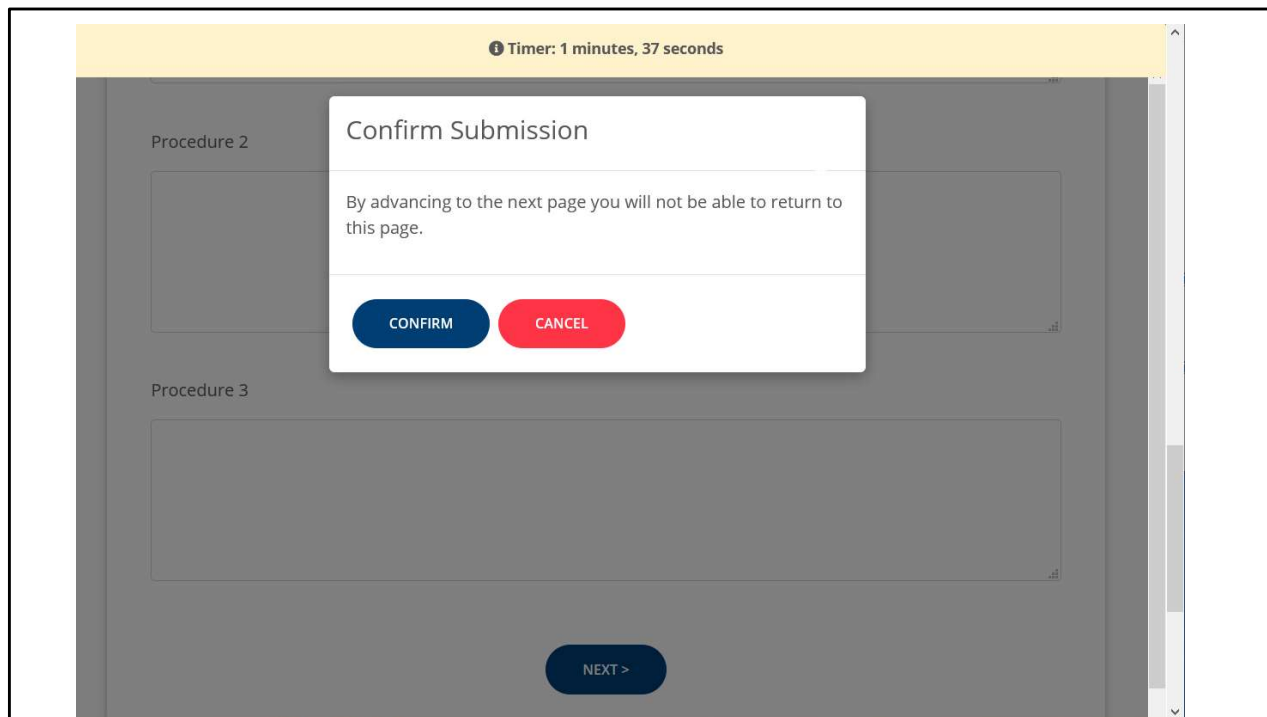


This Case-Based Section example shows the clock (red arrow) which is the time remaining just for this page. You will advance to the next page automatically at the end of that time period if you do not choose to advance yourself by clicking next at the bottom of the page. The purple arrow points to a typical scroll bar to move up/down a page. The green arrow points to the completion bar so the examinee has a concept of how much of the test has been completed. This bar represents the entire Case-Based section (including the orthopedic and soft tissue units). A similar bar is displayed on the Practical Section. Note, Image 1.1 (orange dashed circles) can only be viewed if clicked, it is not embedded.



This is what is displayed after "Image 1.1" is clicked. The enlarged image will overlay the entire screen until the "X" is clicked (red arrow), to close the overlay and return the examinee to the test page.



In this Case-Based example the examinee has already hit “Next” at the bottom of the page and a pop up box has appeared to confirm that they wish to advance to the next page. Since the examinee **cannot** go back to a previous page on the Case-Based section this pop up box is extra security so the examinee does not advance accidentally.

Timer: 0 minutes, 55 seconds

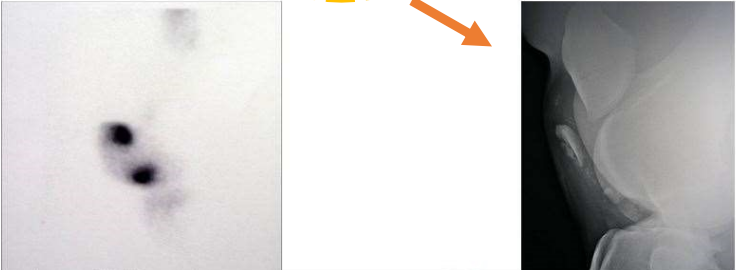
ACVS Large Animal Practical 2021 - Demonstration

50% Completed

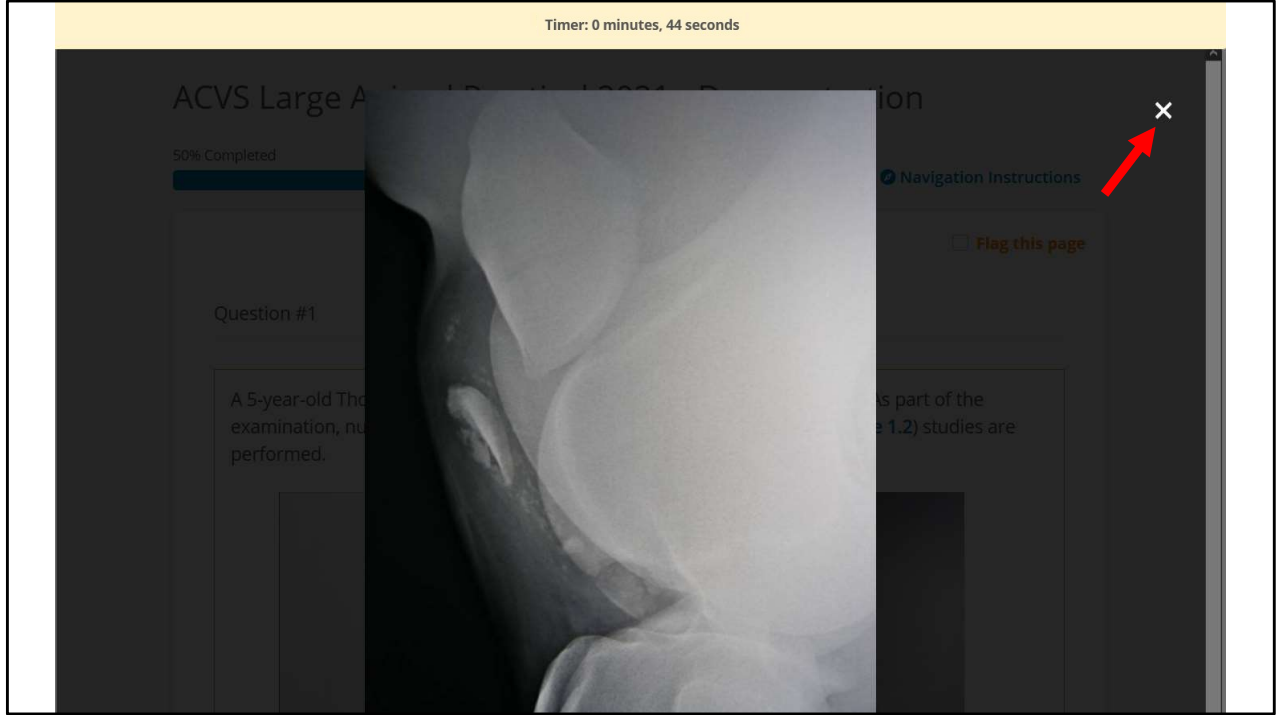
[Navigation Instructions](#)

Question #1

A 5-year-old Thoroughbred is presented following being hit by a falling tree. As part of the examination, nuclear scintigraphy ([Image 1.1](#)) and radiographic ([Image 1.2](#)) studies are performed.



In this Practical section example, similar to the Case-Based section, the banner at the top is the time remaining for this page and you will NOT be able to go back once you advance. The dashed orange circle is over a hyperlink that can be clicked to enlarge Image 1.2. The orange arrow points to image 1.2 that in this particular example is also embedded into the test. Some images are not embedded, and just viewed when the hyperlink is clicked (as displayed earlier).



This is what is displayed after “Image 1.2” is clicked. The enlarged image will overlay the entire screen until the “x” is clicked (red arrow), to close the overlay and return the examinee to the test page.